



Apt 2, Prince Of Wales Mews Church Street, Eckington, Sheffield, S21 4BG

Saxton Mee



# Prince Of Wales Mews Church ~ Eckington

Price Guide

## £140,000

Guide price £140,000 - £150,000

A most appealing two double bedroomed duplex apartment forming part of this exclusive mews development close to the centre of Eckington and its good range of local amenities.

The property offers spacious accommodation with the benefit of allocated parking, upvc double glazing and gas central heating. Equally ideal for the retired, first time buyer or investor the well presented accommodation briefly comprises: entrance hall which serves just this and one other apartment, stairs rising to the first floor, landing, large open plan living/dining kitchen with a range of modern fitted units and integrated appliances, double bedroom to the rear and excellent bathroom with shower over the bath. To the second floor is a further double bedroom.

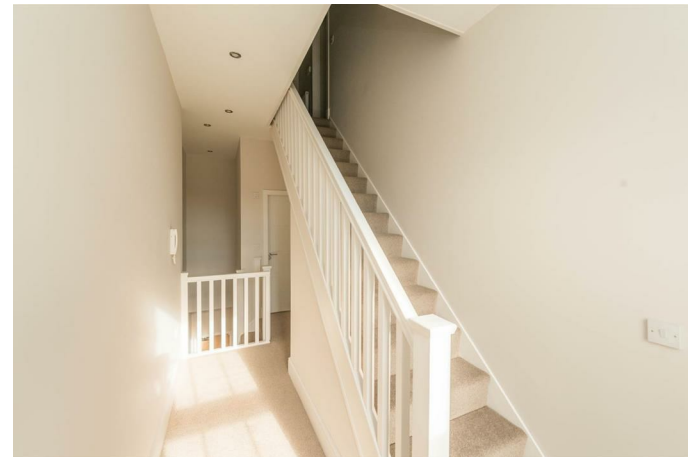
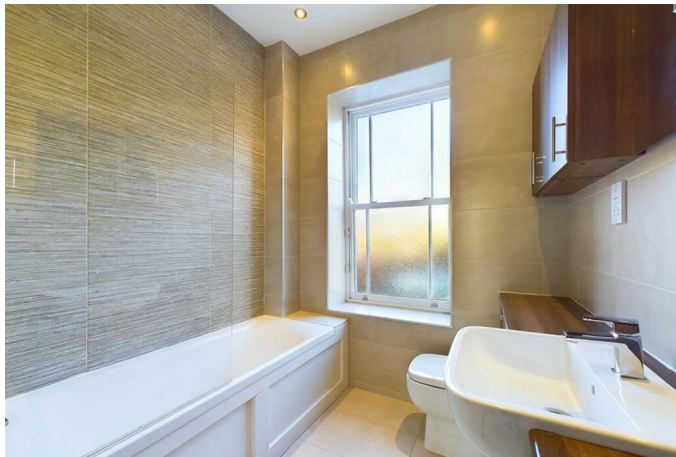
Allocated parking.

Leasehold - 125 years from 1/4/2016 (116 years remaining) One payment at £2149 divided over 10 months which includes insurance for the building and maintenance of communal areas.

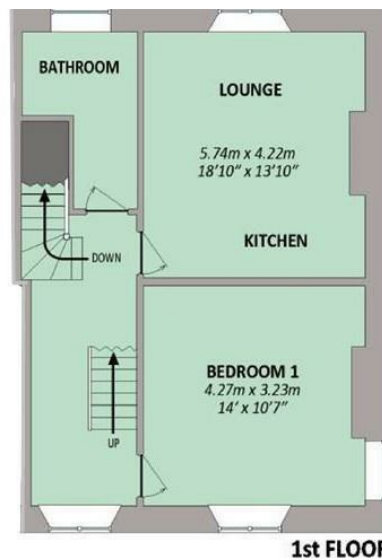


- Perfect for the retired, investor or first time buyer
- Sympathetic conversion from the Prince of Wales public house
- Gas central heating and double glazing
- Allocated parking
- Two double bedrooms
- Open plan living/dining kitchen
- EPC: C
- Leasehold
- No Chain
- Council tax Band - A







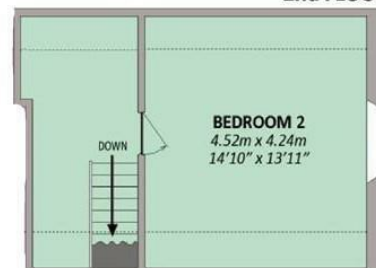


**PRINCE OF WALES MEWS  
CHURCH STREET  
ECKINGTON**

Apartment 2



**2nd FLOOR**



While we endeavour to make our sales particulars fair, accurate and reliable, they are only a general guide to the property and, accordingly, if there is any point, which is of particular importance to you, please contact the relevant office. The Agents have not tested any apparatus, equipment, fittings or services and so cannot verify they are in working order. The buyer is advised to obtain verification. Please note all the measurement details are approximate and should not be relied upon as exact. All plans, floor plans and maps are for guidance purposes only and are not to scale. Under no circumstances should they be relied upon as exact or for use in planning carpets and other such fixtures, fittings or furnishings. YOUR HOME IS AT RISK IF YOU DO NOT KEEP UP REPAYMENTS ON A MORTGAGE OR OTHER LOAN SECURED ON IT. 'A Life Assurance policy may be requested.' 'Written Quotations of credit terms available on request.'

Banner Cross  
T: 0114 268 3241  
E: [bannercross@saxtonmee.co.uk](mailto:bannercross@saxtonmee.co.uk)  
[www.saxtonmee.co.uk](http://www.saxtonmee.co.uk)

Dronfield  
T: 01246 290992  
E: [dronfield@saxtonmee.co.uk](mailto:dronfield@saxtonmee.co.uk)

Hathersage  
T: 01433 650009  
E: [hathersage@saxtonmee.co.uk](mailto:hathersage@saxtonmee.co.uk)

Bakewell  
T: 01629 815307  
E: [bakewell@saxtonmee.co.uk](mailto:bakewell@saxtonmee.co.uk)

Matlock  
T: 01629 828250  
E: [matlock@saxtonmee.co.uk](mailto:matlock@saxtonmee.co.uk)

